

# CREATE: IDENTIFYING MEADOW PLANTS

## Creating a key

Scientists such as botanists use keys to help them identify plants. There are many different types of key but one of the most commonly used is called a branching or **dichotomous key**. Developing your own key will help you to understand the differences between some of the plants you find in meadows.

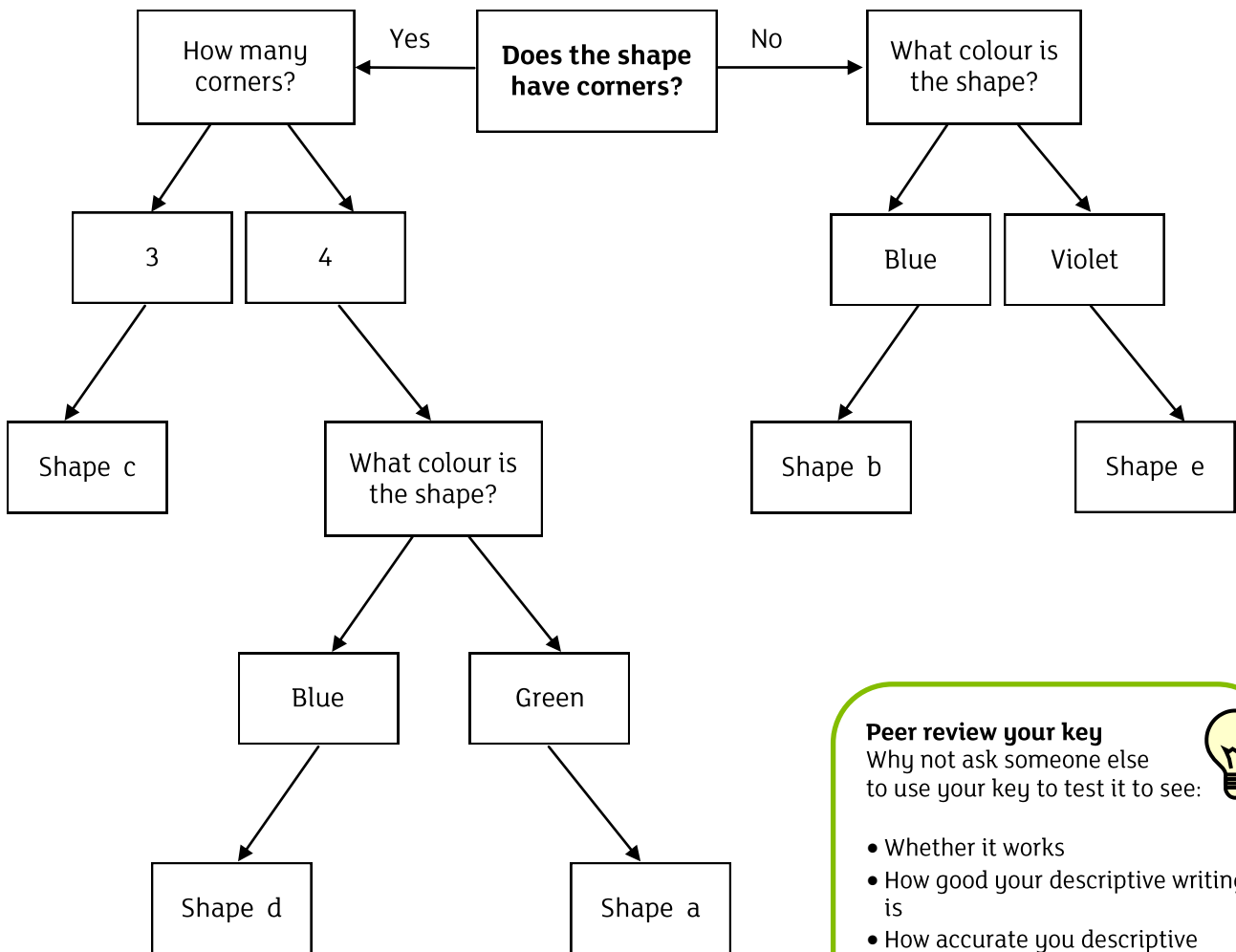
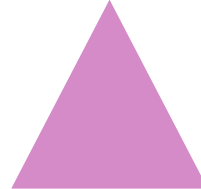
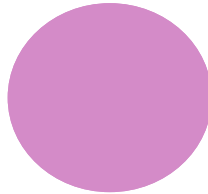
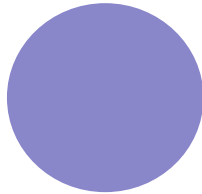


You can create a key for almost anything!

### ACTIVITY 1 .

Can you use the key below to label

each of the five shapes a, b, c,



#### Peer review your key

Why not ask someone else to use your key to test it to see:



- Whether it works
- How good your descriptive writing is
- How accurate your descriptive writing is

### ACTIVITY 2 .

Now use the images of the 6 plants shown in **card set 2** to develop your own dichotomous or branching key. Try to use descriptions of the leaf and flower shapes in your key:

#### Talk about:

- shape of leaf
- the leaf edge
- how the leaves arrange themselves around the stem of the plant
- the number of petals
- the colour of the petals
- shape of the flower

# CREATE: IDENTIFYING MEADOW PLANTS

## Creating a key

Answer Sheet

Scientists such as botanists use keys to help them identify plants. There are many different types of key but one of the most commonly used is called a branching or **dichotomous key**. Developing your own key will help you to understand the differences between some of the plants you find in meadows.



You can create a key for almost anything!

